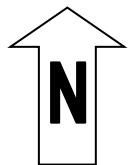




LEGEND

- Project Site Boundary
- Stage 1 Demolition Area (Above Ground Only)
- Stage 2 Demolition (Below Ground Only)
- Stage 2 Demolition (Above and Below Ground)
- Stage 2 Demolition (Structures Requiring Explosives)



Hydro Aluminium Kurri Kurri Pty Ltd

Stockpiled Contaminated Soil Locations

Response to Submissions Report

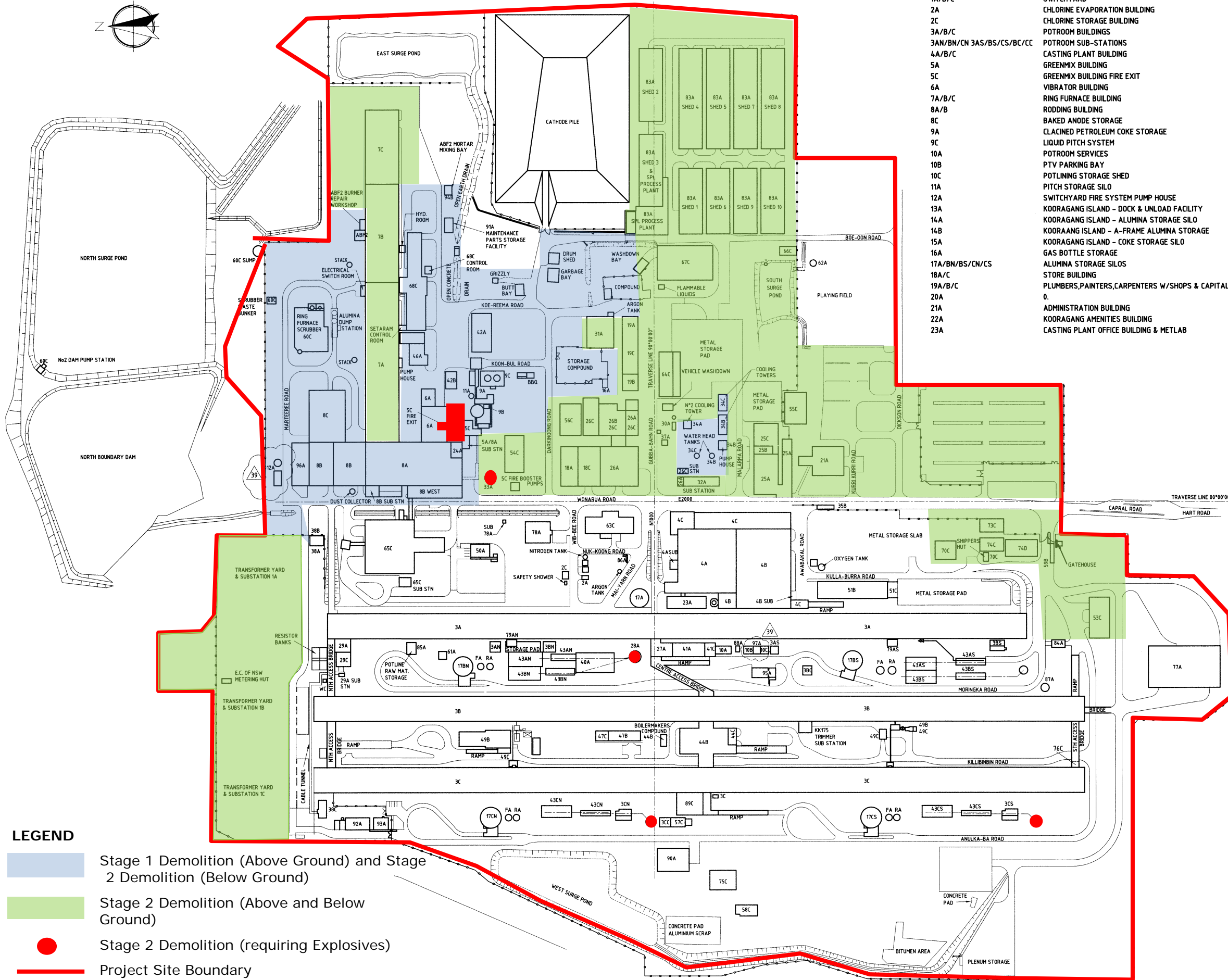
(Source: Google Earth, 2018)



Job No: AS130401

Date: August 2018

FIGURE 30A



LEGEND

- | | | | |
|---------------------------|--|--------------------|---|
| 1A/B/C | SWITCHYARD | 24A | CARBON PLANT OFFICE BUILDING |
| 2A | CHLORINE EVAPORATION BUILDING | 25A/B/C | GATEHOUSE, MEDICAL CENTRE, PERSONNEL & BATHHOUSE |
| 2C | CHLORINE STORAGE BUILDING | 26A/B/C | ENG. BLDG/APPRENTICE W/SHOP & MAINT W/SHOP, BOILERMAKERS |
| 3A/B/C | POTROOM BUILDINGS | 27A | POTROOM SERVICES WORKSHOP |
| 3AN/BN/CN 3AS/BS/CS/BC/CC | POTROOM SUB-STATIONS | 28A | MAIN STACK & DUCTWORK |
| 4A/B/C | CASTING PLANT BUILDING | 29A/C | POTROOM ELECTRICAL CONTROL BUILDINGS - SUBSTATION |
| 5A | GREENMIX BUILDING | 29B | SWITCHYARD SWITCHROOM |
| 5C | GREENMIX BUILDING FIRE EXIT | 30A | FUEL OIL SYSTEM |
| 6A | VIBRATOR BUILDING | 31A | CROSS STORAGE BUILDING |
| 7A/B/C | RING FURNACE BUILDING | 32A | COMPRESSOR HOUSE |
| 8A/B | RODDING BUILDING | 33A | WATER STORAGE AND PUMPHOUSE |
| 8C | BAKED ANODE STORAGE | 34A/B/C | COOLING TOWERS AND PUMPHOUSE |
| 9A | CLACINED PETROLEUM COKE STORAGE | 35B | WEIGHBRIDGE |
| 9C | LIQUID PITCH SYSTEM | 36A | SWITCHYARD WORKSHOP - DEMOLISHED 2009 |
| 10A | POTROOM SERVICES | 37A | SEWERAGE PUMPHOUSE |
| 10B | PTV PARKING BAY | 38A/B/C | 1KV SWITCHROOMS |
| 10C | POTLINING STORAGE SHED | 39A | SWITCHYARD COMPRESSOR ROOM - DEMOLISHED 2009 |
| 11A | PITCH STORAGE SILO | 40A | CATHODE RODDING BUILDING |
| 12A | SWITCHYARD FIRE SYSTEM PUMP HOUSE | 41A/B/C | POTROOM OFFICE BUILDING |
| 13A | KOORAGANG ISLAND - DOCK & UNLOAD FACILITY | 42A/B | RODDING MIX STORAGE BUILDING |
| 14A | KOORAGANG ISLAND - ALUMINA STORAGE SILO | 43A/AS/BN/BS/CN/CS | DRY SCRUBBER PLANTS |
| 14B | KOORAGANG ISLAND - A-FRAME ALUMINA STORAGE | 44B/C | PTA MAINTENANCE BUILDING & OFFICES |
| 15A | KOORAGANG ISLAND - COKE STORAGE SILO | 45A | SWITCHYARD STOREROOM - DEMOLISHED 2009 |
| 16A | GAS BOTTLE STORAGE | 46A | CARBON PLANT WORKSHOP & OFFICE |
| 17A/BN/BS/CN/CS | ALUMINA STORAGE SILOS | 47B/C | POTROOM LUNCHROOM & TOILET BLOCK |
| 18A/C | STORE BUILDING | 49B/C | BATH CRUSHING PLANT, CRUST FEED BATH DUMP |
| 19A/B/C | PLUMBERS, PAINTERS, CARPENTERS W/SHOPS & CAPITAL STORE | 50A | SWITCHYARD UPGRADE PROJECT OFFICE |
| 20A | 0. | 51B/C | CASTING PLANT SERVICES BUILDING |
| 21A | ADMINISTRATION BUILDING | 53C | POT REBUILD WORKSHOP |
| 22A | KOORAGANG AMENITIES BUILDING | 54C | CARBON PLANT AMENITIES & OFFICE BUILDING |
| 23A | CASTING PLANT OFFICE BUILDING & METLAB | 55C | PERSONNEL TRAINING CENTRE |
| | | 56C | MAINTENANCE OFFICE BUILDING & INSTRUMENT FITTERS WORKSHOP |
| | | 57C | COMPRESSOR HOUSE - WEST |
| | | 58C | REFRACTORY STORAGE |
| | | 59B | WEIGHBRIDGE AND GATEHOUSE |
| | | 60C | RING FURNACE SCRUBBER |
| | | 61A | DRY SCRUBBER LUNCHROOM |
| | | 62A | METEOROLOGICAL TOWER |
| | | 63C | EOHS BUILDING |
| | | 64C | MOBILE VEHICLE WORKSHOP |
| | | 65C | BUTT CLEANING BUILDING - SUBSTATION |
| | | 66C | NATURAL GAS METER STATION |
| | | 67C | CATHODE DISPOSAL BUILDING |
| | | 68C | GREEN & BAKED ANODE STORAGE BUILDING - SUBSTATION |
| | | 70C | TRUCK LOADING SHELTER / SHIPPERS HUT |
| | | 72A | SWITCHYARD AMENITIES BUILDING - DEMOLISHED 2009 |
| | | 73C | CASTING MAINTENANCE STORAGE SHED |
| | | 74C | CASTING ALLOY STORAGE SHED |
| | | 74D | CASTING ALLOY STORAGE SHED |
| | | 75A | SLAB REPAIR SHED |
| | | 75C | POTLINING BRICK STORAGE |
| | | 76C | TIP CLEANING STATION |
| | | 77A | POT REBUILD |
| | | 78A | COMPUTER CENTRE |
| | | 79AN | NORTH EQUIPMENT ROOM |
| | | 79AS | SOUTH EQUIPMENT ROOM |
| | | 81A | POTLINING CENTRE - NOT INSTALLED |
| | | 82A | DELINING ROOM - NOT INSTALLED |
| | | 83A | SPL STORAGE & PROCESS PLANT |
| | | 84A | BROCHOT RAMMING MACHINE STORAGE BLDG |
| | | 85A | POTLINE RAW MATERIAL STORAGE |
| | | 86A | LPG GAS BOTTLE FILL STATION |
| | | 87A | ELECTROLYTE TRUCK LOADING STATION |
| | | 88A | POT SERVICES STORAGE SHED |
| | | 89C | CRUCIBLE CLEANING FACILITY |
| | | 90A | BULK BAG STORAGE FACILITY |
| | | 91A | MAINTENANCE SPARES STORAGE FACILITY |
| | | 92A | SWITCHYARD STORAGE/WORKSHOP |
| | | 93A | SWITCHYARD OFFICE BUILDINGS |
| | | 94A | (FUTURE) REFRACTORY AMENITIES & OFFICE BUILDING |
| | | 94B | (FUTURE) MORTAR MIXING BAY T.B.C (HOLD) |
| | | 95A | VEHICLE WASHDOWN & PARKING STORAGE |
| | | 96A | ANODE STORAGE BUILDING |
| | | 97A | BATTERY EXCHANGE BAY |

LEGEND

- Stage 1 Demolition (Above Ground) and Stage 2 Demolition (Below Ground)
- Stage 2 Demolition (Above and Below Ground)
- Stage 2 Demolition (requiring Explosives)
- Project Site Boundary